



Project no. 018340

Project acronym: EDIT

Project title: Toward the European Distributed Institute of Taxonomy

Instrument: Network of Excellence

Thematic Priority: Sub-Priority 1.1.6.3: "Global Change and Ecosystems"

M5.15 Taxonomic core components available for platform

Due date of milestone: Month 29
Actual submission date: Month 29

Start date of project: 01/03/2006

Duration: 5 years

Organisation name of lead contractor for this milestone: 9 FUB-BGBM

Revision: final

Project co-funded by the European Commission within the Sixth Framework Programme (2002-2006)		
Dissemination Level		
PU	Public	X
PP	Restricted to other programme participants (including the Commission Services)	
RE	Restricted to a group specified by the consortium (including the Commission Services)	
CO	Confidential, only for members of the consortium (including the Commission Services)	

M5.15 Taxonomic core components available for platform

The original EDIT platform for cybertaxonomy as planned in the initial description of work was designed as a set of loosely coupled independent biodiversity informatics applications communicating via well defined interfaces. This architecture has dramatically changed during the first project year towards a set of applications being built around a common data model (CDM) which is the basis for data processing in the entire platform (<http://dev.e-taxonomy.eu/trac/wiki/CommonDataModel#CDMVersion1.0>). This decision changed also the design of the “taxonomic core components” from an autonomous application and database system for capturing and maintaining taxonomic core data (names, taxa, synonymies, etc.) into an integrated part of the CDM-based platform.

The taxonomic core components are now available as part of the CDM offering a comprehensive data model for representing the following items:

- taxonomic names according different nomenclatural standards
- name relations
- taxonomic synonymies
- groupings of synonyms (heterotypic, homotypic)
- concept relations and misapplied names
- taxonomic hierarchies
- descriptions
- distribution

The core data store is accompanied with advanced editor software based on the Eclipse Rich Client Platform (<http://dev.e-taxonomy.eu/trac/wiki/TaxonomicEditor>). User interface and workflow requirements have been defined based on experiences with existing projects (e.g. several Berlin-Model based projects), email and personal discussions with the WP6 exemplar groups as well as an expert workshop dedicated to the design of taxonomic editing systems supporting concept processing (<http://wp5.e-taxonomy.eu/blog/node/97>).

The editor prototype has been made available in July 2008. Version 1 is to be made available by end of September 2008. Both prototype and Version 1 are equipped with an h2 database engine (<http://www.h2database.com/>) containing an instance of the core platform component data structures needed for taxonomic editing.

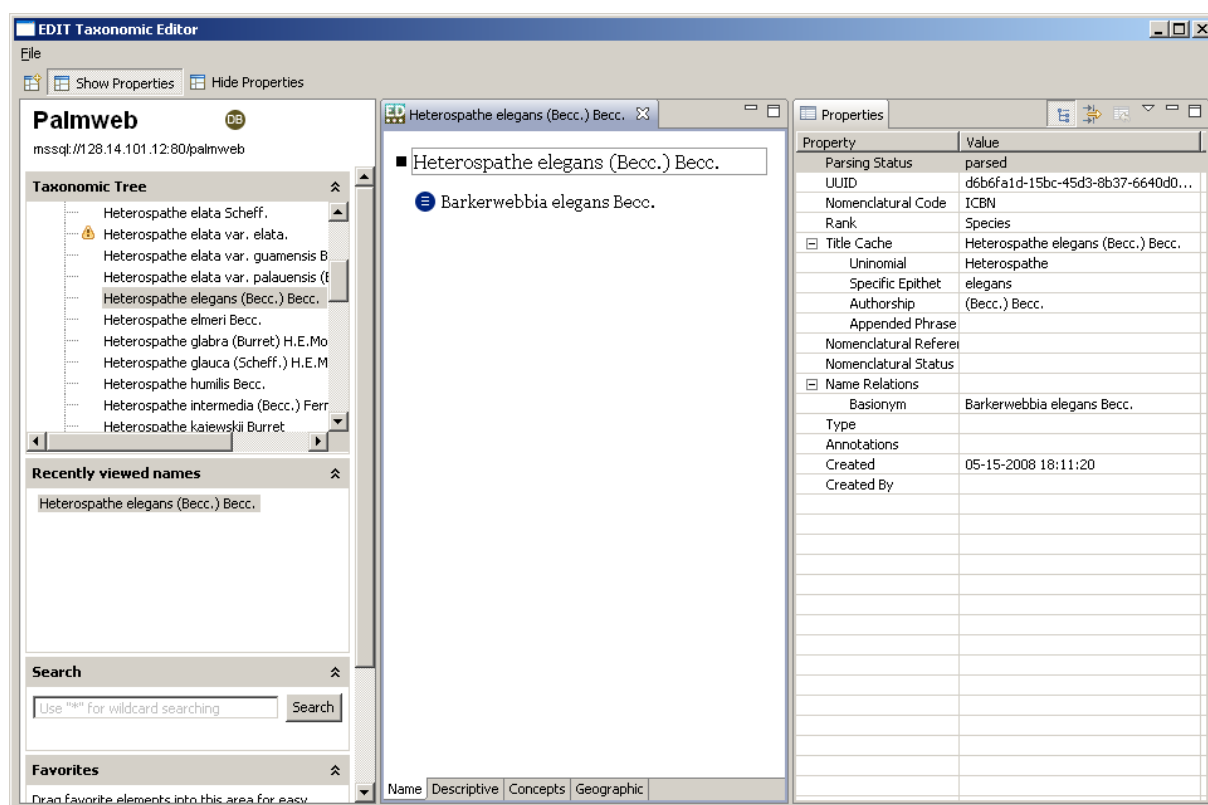


Fig.: the EDIT Taxonomic Editor offering three regions for i) tree browsing and searching, ii) entering and editing free-text which is parsed on the fly, and iii) entering and editing data in “traditional” forms.

In addition to the database and editing system, CDM-enabled publication software has been developed which is capable of providing CDM based taxonomic core data in a World Wide Web portal. The software is highly configurable with regard to its user interface design and several installations exist already. The most data-rich installation is the EDIT WP6 Cichorieae portal at <http://dev.e-taxonomy.eu/dataportal/cichorieae/>.